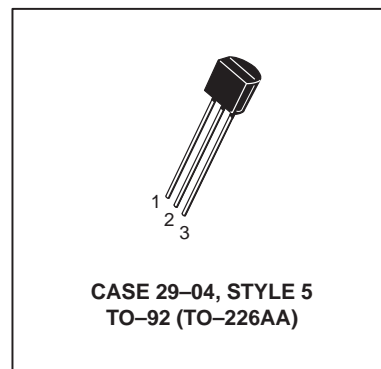
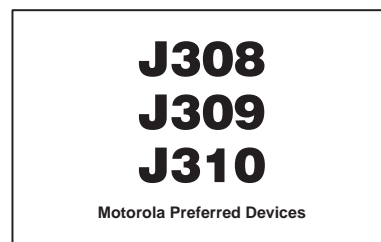
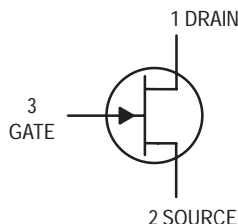


# JFET VHF/UHF Amplifiers

## N-Channel — Depletion



### MAXIMUM RATINGS

Rating	Symbol	Value	Unit
Drain-Source Voltage	$V_{DS}$	25	Vdc
Gate-Source Voltage	$V_{GS}$	25	Vdc
Forward Gate Current	$I_{GF}$	10	mAdc
Total Device Dissipation @ $T_A = 25^\circ\text{C}$ Derate above $25^\circ\text{C}$	$P_D$	350 2.8	mW mW/ $^\circ\text{C}$
Junction Temperature Range	$T_J$	-65 to +125	$^\circ\text{C}$
Storage Temperature Range	$T_{stg}$	-65 to +150	$^\circ\text{C}$

### ELECTRICAL CHARACTERISTICS ( $T_A = 25^\circ\text{C}$ unless otherwise noted)

Characteristic	Symbol	Min	Typ	Max	Unit
----------------	--------	-----	-----	-----	------

#### OFF CHARACTERISTICS

Gate-Source Breakdown Voltage ( $I_G = -1.0 \mu\text{Adc}$ , $V_{DS} = 0$ )	$V_{(BR)GSS}$	-25	—	—	Vdc
Gate Reverse Current ( $V_{GS} = -15 \text{ Vdc}$ , $V_{DS} = 0$ , $T_A = 25^\circ\text{C}$ ) ( $V_{GS} = -15 \text{ Vdc}$ , $V_{DS} = 0$ , $T_A = +125^\circ\text{C}$ )	$I_{GSS}$	— —	— —	-1.0 -1.0	nAdc $\mu\text{Adc}$
Gate Source Cutoff Voltage ( $V_{DS} = 10 \text{ Vdc}$ , $I_D = 1.0 \text{ nAdc}$ )	$V_{GS(off)}$	J308 J309 J310	— — —	-6.5 -4.0 -6.5	Vdc

#### ON CHARACTERISTICS

Zero-Gate-Voltage Drain Current <sup>(1)</sup> ( $V_{DS} = 10 \text{ Vdc}$ , $V_{GS} = 0$ )	$I_{DSS}$	J308 J309 J310	12 12 24	— — —	60 30 60	mAdc
Gate-Source Forward Voltage ( $V_{DS} = 0$ , $I_G = 1.0 \text{ mAdc}$ )	$V_{GS(f)}$		—	—	1.0	Vdc

#### SMALL-SIGNAL CHARACTERISTICS

Common-Source Input Conductance ( $V_{DS} = 10 \text{ Vdc}$ , $I_D = 10 \text{ mAdc}$ , $f = 100 \text{ MHz}$ )	$\text{Re}(y_{is})$	J308 J309 J310	— — —	0.7 0.7 0.5	— — —	mmhos
Common-Source Output Conductance ( $V_{DS} = 10 \text{ Vdc}$ , $I_D = 10 \text{ mAdc}$ , $f = 100 \text{ MHz}$ )	$\text{Re}(y_{os})$		—	0.25	—	mmhos
Common-Gate Power Gain ( $V_{DS} = 10 \text{ Vdc}$ , $I_D = 10 \text{ mAdc}$ , $f = 100 \text{ MHz}$ )	$G_{pg}$		—	16	—	dB

1. Pulse Test: Pulse Width  $\leq 300 \mu\text{s}$ , Duty Cycle  $\leq 3.0\%$ .

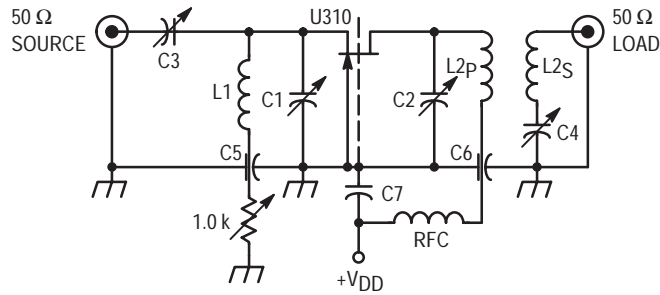
## J308 J309 J310

### ELECTRICAL CHARACTERISTICS ( $T_A = 25^\circ\text{C}$ unless otherwise noted) (Continued)

Characteristic	Symbol	Min	Typ	Max	Unit
<b>SMALL-SIGNAL CHARACTERISTICS (continued)</b>					
Common-Source Forward Transconductance ( $V_{DS} = 10\text{ Vdc}$ , $I_D = 10\text{ mAdc}$ , $f = 100\text{ MHz}$ )	$\text{Re}(y_{fs})$	—	12	—	mmhos
Common-Gate Input Conductance ( $V_{DS} = 10\text{ Vdc}$ , $I_D = 10\text{ mAdc}$ , $f = 100\text{ MHz}$ )	$\text{Re}(y_{ig})$	—	12	—	mmhos
Common-Source Forward Transconductance ( $V_{DS} = 10\text{ Vdc}$ , $I_D = 10\text{ mAdc}$ , $f = 1.0\text{ kHz}$ )	$g_{fs}$	8000 10000 8000	— — —	20000 20000 18000	$\mu\text{mhos}$
J308 J309 J310					
Common-Source Output Conductance ( $V_{DS} = 10\text{ Vdc}$ , $I_D = 10\text{ mAdc}$ , $f = 1.0\text{ kHz}$ )	$g_{os}$	—	—	250	$\mu\text{mhos}$
Common-Gate Forward Transconductance ( $V_{DS} = 10\text{ Vdc}$ , $I_D = 10\text{ mAdc}$ , $f = 1.0\text{ kHz}$ )	$g_{fg}$	— — —	13000 13000 12000	— — —	$\mu\text{mhos}$
J308 J309 J310					
Common-Gate Output Conductance ( $V_{DS} = 10\text{ Vdc}$ , $I_D = 10\text{ mAdc}$ , $f = 1.0\text{ kHz}$ )	$g_{og}$	— — —	150 100 150	— — —	$\mu\text{mhos}$
J308 J309 J310					
Gate-Drain Capacitance ( $V_{DS} = 0$ , $V_{GS} = -10\text{ Vdc}$ , $f = 1.0\text{ MHz}$ )	$C_{gd}$	—	1.8	2.5	pF
Gate-Source Capacitance ( $V_{DS} = 0$ , $V_{GS} = -10\text{ Vdc}$ , $f = 1.0\text{ MHz}$ )	$C_{gs}$	—	4.3	5.0	pF

### FUNCTIONAL CHARACTERISTICS

Noise Figure ( $V_{DS} = 10\text{ Vdc}$ , $I_D = 10\text{ mAdc}$ , $f = 450\text{ MHz}$ )	NF	—	1.5	—	dB
Equivalent Short-Circuit Input Noise Voltage ( $V_{DS} = 10\text{ Vdc}$ , $I_D = 10\text{ mAdc}$ , $f = 100\text{ Hz}$ )	$\bar{e}_n$	—	10	—	$\text{nV}/\sqrt{\text{Hz}}$



C1 = C2 = 0.8 – 10 pF, JFD #MVM010W.  
 C3 = C4 = 8.35 pF Erie #539-002D.  
 C5 = C6 = 5000 pF Erie (2443-000).  
 C7 = 1000 pF, Allen Bradley #FA5C.  
 RFC = 0.33 μH Miller #9230-30.  
 L1 = One Turn #16 Cu, 1/4" I.D. (Air Core).  
 L2p = One Turn #16 Cu, 1/4" I.D. (Air Core).  
 L2s = One Turn #16 Cu, 1/4" I.D. (Air Core).

Figure 1. 450 MHz Common-Gate Amplifier Test Circuit

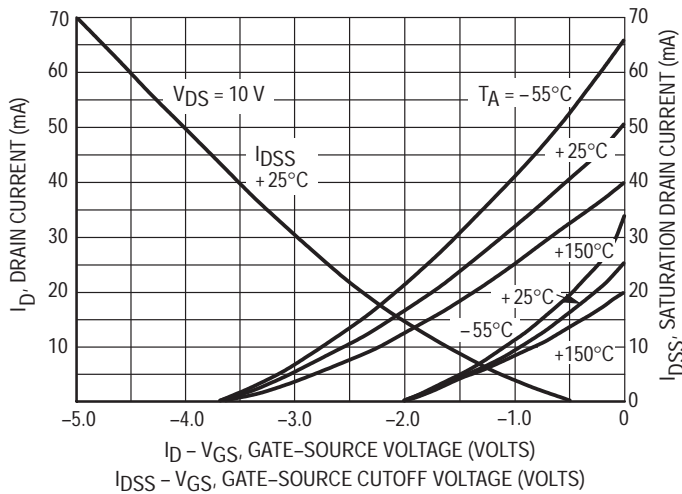


Figure 2. Drain Current and Transfer Characteristics versus Gate-Source Voltage

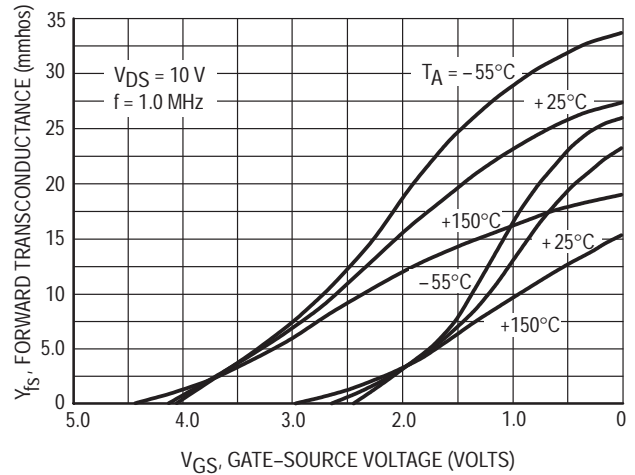


Figure 3. Forward Transconductance versus Gate-Source Voltage

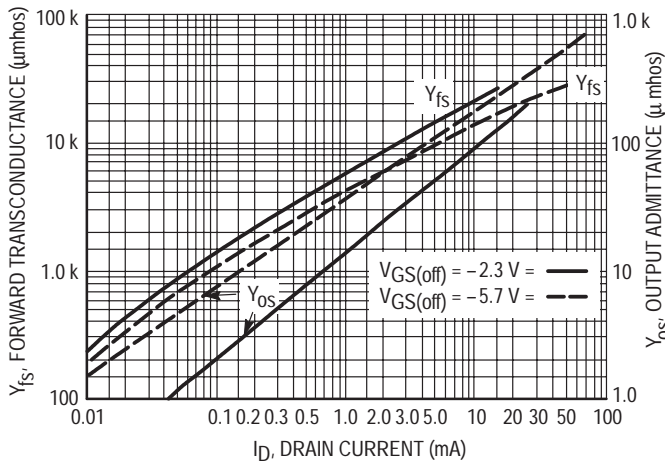


Figure 4. Common-Source Output Admittance and Forward Transconductance versus Drain Current

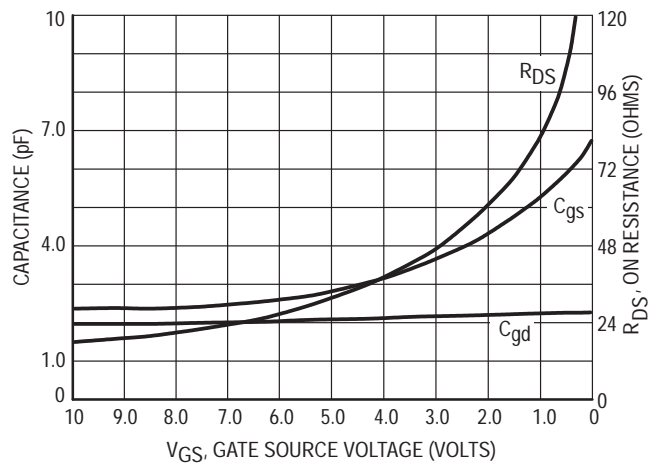


Figure 5. On Resistance and Junction Capacitance versus Gate-Source Voltage

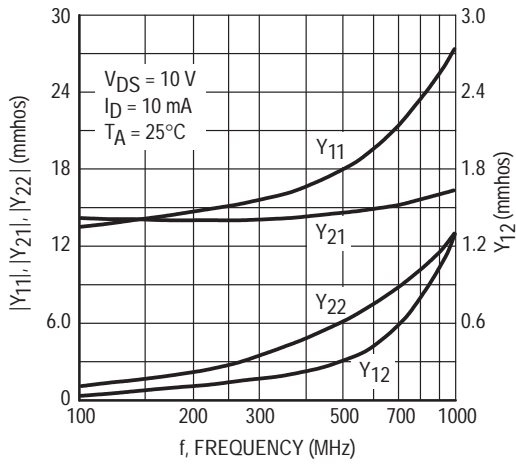


Figure 6. Common-Gate Y Parameter Magnitude versus Frequency

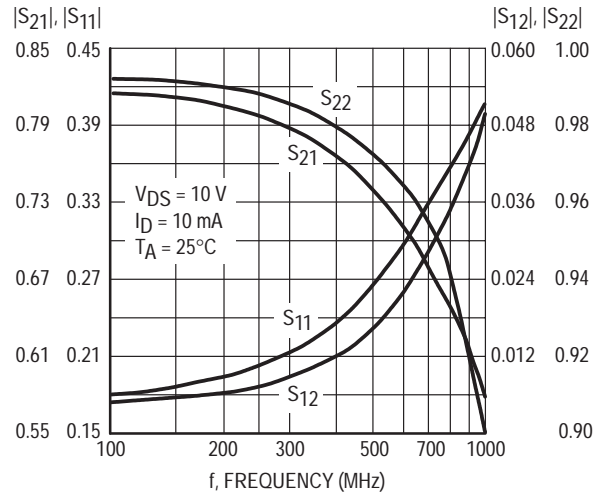


Figure 7. Common-Gate S Parameter Magnitude versus Frequency

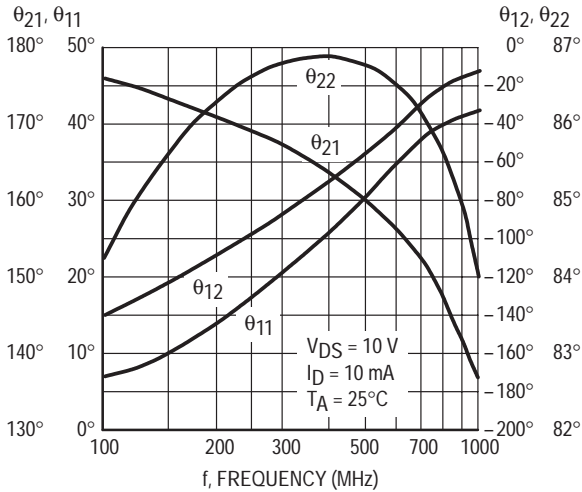


Figure 8. Common-Gate Y Parameter Phase-Angle versus Frequency

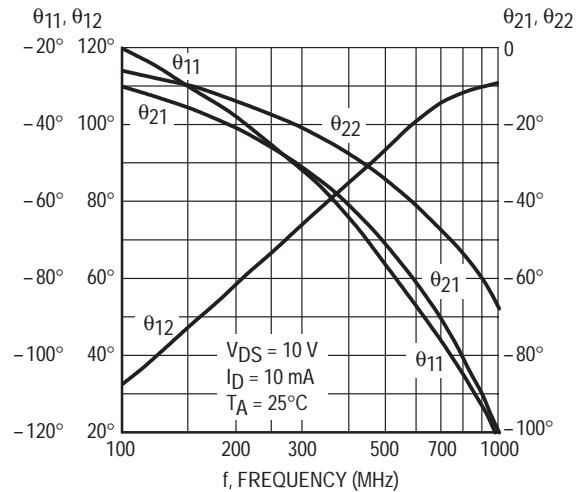


Figure 9. S Parameter Phase-Angle versus Frequency

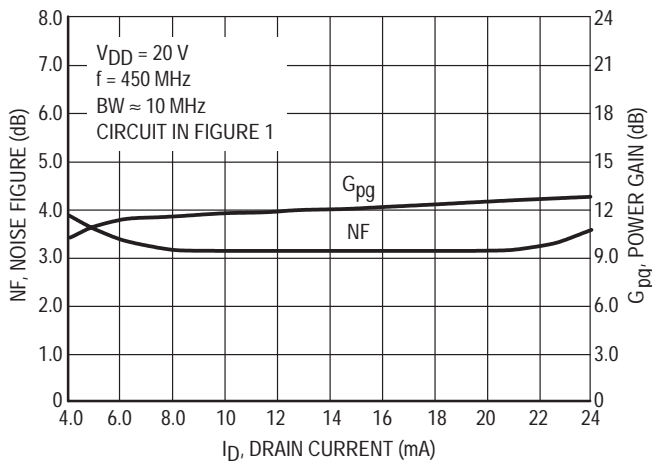


Figure 10. Noise Figure and Power Gain versus Drain Current

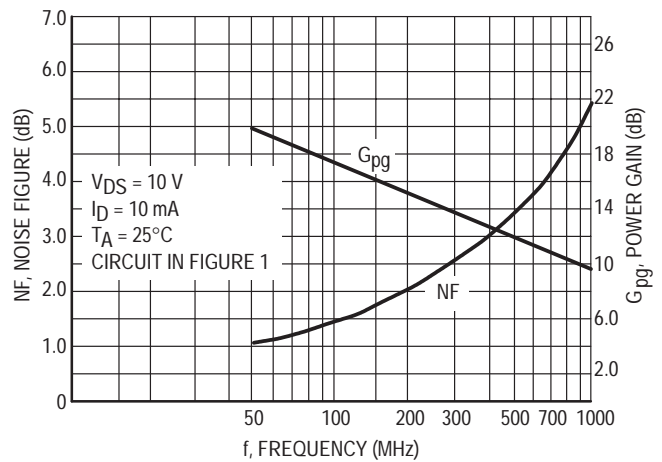
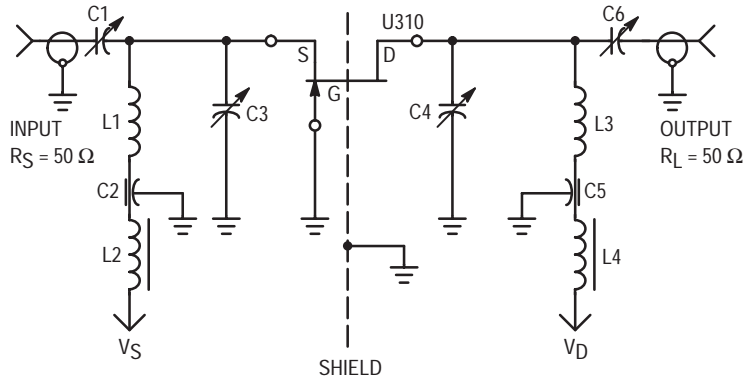


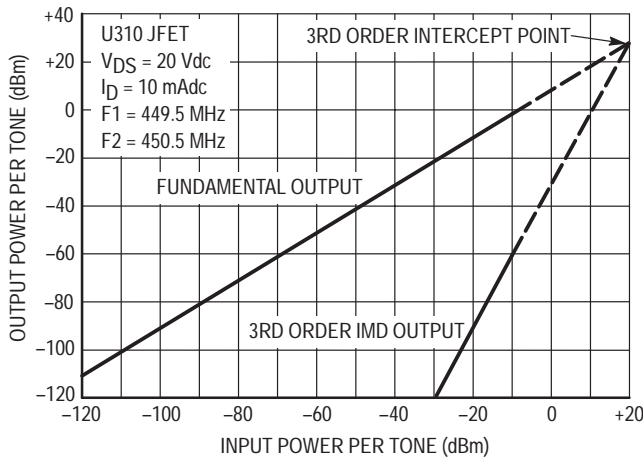
Figure 11. Noise Figure and Power Gain versus Frequency



$B_W$  (3 dB) – 36.5 MHz  
 $I_D$  – 10 mAdc  
 $V_{DS}$  – 20 Vdc  
 Device case grounded  
 IM test tones –  $f_1 = 449.5$  MHz,  $f_2 = 450.5$  MHz  
 $C_1 = 1\text{--}10$  pF Johanson Air variable trimmer.  
 $C_2, C_5 = 100$  pF feed thru button capacitor.  
 $C_3, C_4, C_6 = 0.5\text{--}6$  pF Johanson Air variable trimmer.  
 $L_1 = 1/8'' \times 1/32'' \times 1\text{--}5/8''$  copper bar.  
 $L_2, L_4 =$  Ferroxcube Vk200 choke.  
 $L_3 = 1/8'' \times 1/32'' \times 1\text{--}7/8''$  copper bar.

Figure 12. 450 MHz IMD Evaluation Amplifier

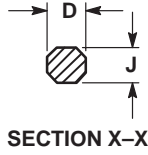
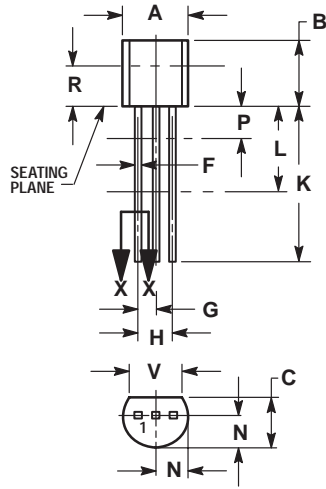
Amplifier power gain and IMD products are a function of the load impedance. For the amplifier design shown above with C4 and C6 adjusted to reflect a load to the drain resulting in a nominal power gain of 9 dB, the 3rd order intercept point (IP) value is 29 dBm. Adjusting C4, C6 to provide larger load values will result in higher gain, smaller bandwidth and lower IP values. For example, a nominal gain of 13 dB can be achieved with an intercept point of 19 dBm.



Example of intercept point plot use:  
 Assume two in-band signals of  $-20$  dBm at the amplifier input. They will result in a 3rd order IMD signal at the output of  $-90$  dBm. Also, each signal level at the output will be  $-11$  dBm, showing an amplifier gain of 9.0 dB and an intermodulation ratio (IMR) capability of 79 dB. The gain and IMR values apply only for signal levels below comparison.

Figure 13. Two Tone 3rd Order Intercept Point

PACKAGE DIMENSIONS




NOTES:

1. DIMENSIONING AND TOLERANCING PER ANSI Y14.5M, 1982.
2. CONTROLLING DIMENSION: INCH.
3. CONTOUR OF PACKAGE BEYOND DIMENSION R IS UNCONTROLLED.
4. DIMENSION F APPLIES BETWEEN P AND L. DIMENSION D AND J APPLY BETWEEN L AND K. MINIMUM. LEAD DIMENSION IS UNCONTROLLED IN P AND BEYOND DIMENSION K MINIMUM.

DIM	INCHES		MILLIMETERS	
	MIN	MAX	MIN	MAX
A	0.175	0.205	4.45	5.20
B	0.170	0.210	4.32	5.33
C	0.125	0.165	3.18	4.19
D	0.016	0.022	0.41	0.55
F	0.016	0.019	0.41	0.48
G	0.045	0.055	1.15	1.39
H	0.095	0.105	2.42	2.66
J	0.015	0.020	0.39	0.50
K	0.500	---	12.70	---
L	0.250	---	6.35	---
N	0.080	0.105	2.04	2.66
P	---	0.100	---	2.54
R	0.115	---	2.93	---
V	0.135	---	3.43	---

**CASE 029-04  
(TO-226AA)  
ISSUE AD**

STYLE 5:  
PIN 1. DRAIN  
2. SOURCE  
3. GATE

Motorola reserves the right to make changes without further notice to any products herein. Motorola makes no warranty, representation or guarantee regarding the suitability of its products for any particular purpose, nor does Motorola assume any liability arising out of the application or use of any product or circuit, and specifically disclaims any and all liability, including without limitation consequential or incidental damages. "Typical" parameters which may be provided in Motorola data sheets and/or specifications can and do vary in different applications and actual performance may vary over time. All operating parameters, including "Typicals" must be validated for each customer application by customer's technical experts. Motorola does not convey any license under its patent rights nor the rights of others. Motorola products are not designed, intended, or authorized for use as components in systems intended for surgical implant into the body, or other applications intended to support or sustain life, or for any other application in which the failure of the Motorola product could create a situation where personal injury or death may occur. Should Buyer purchase or use Motorola products for any such unintended or unauthorized application, Buyer shall indemnify and hold Motorola and its officers, employees, subsidiaries, affiliates, and distributors harmless against all claims, costs, damages, and expenses, and reasonable attorney fees arising out of, directly or indirectly, any claim of personal injury or death associated with such unintended or unauthorized use, even if such claim alleges that Motorola was negligent regarding the design or manufacture of the part. Motorola and  are registered trademarks of Motorola, Inc. Motorola, Inc. is an Equal Opportunity/Affirmative Action Employer.

Mfax is a trademark of Motorola, Inc.

**How to reach us:**

**USA/EUROPE/Locations Not Listed:** Motorola Literature Distribution;  
P.O. Box 5405, Denver, Colorado 80217. 303-675-2140 or 1-800-441-2447

**JAPAN:** Nippon Motorola Ltd.: SPD, Strategic Planning Office, 4-32-1,  
Nishi-Gotanda, Shinagawa-ku, Tokyo 141, Japan. 81-3-5487-8488

**Mfax™:** RMFAX0@email.sps.mot.com – TOUCHTONE 602-244-6609  
– US & Canada ONLY 1-800-774-1848

**ASIA/PACIFIC:** Motorola Semiconductors H.K. Ltd.; 8B Tai Ping Industrial Park,  
51 Ting Kok Road, Tai Po, N.T., Hong Kong. 852-26629298

**INTERNET:** <http://motorola.com/sps>



**MOTOROLA**

